

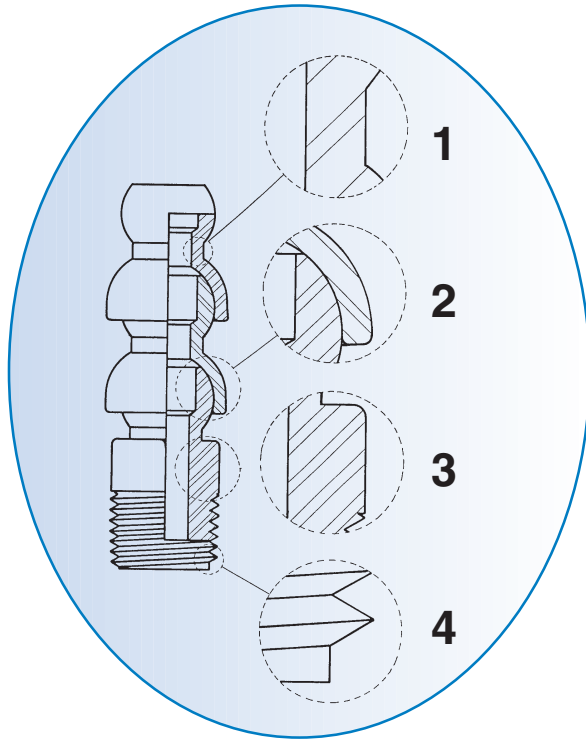
# Snap-Loc Systems

*Adjustable Length And  
Interchangeable  
Components*



# Snap-Loc Systems

## Adjustable Length And Interchangeable Components With Easy Hand Assembly



### FEATURES:

- Industrial Grade
- Adjustable Length
- Easy Hand Assembly
- Unrestricted Flow
- No Vibration Wandering
- Chemical Resistance
- Electrically Non-Conductive
- 3-Dimensional Adjustability

### Fig. 1 Heavy-Duty Construction

Industrial grade wall thickness provides durable parts with long lasting performance.

### Fig. 2 Bearing Surface & Snap Fit

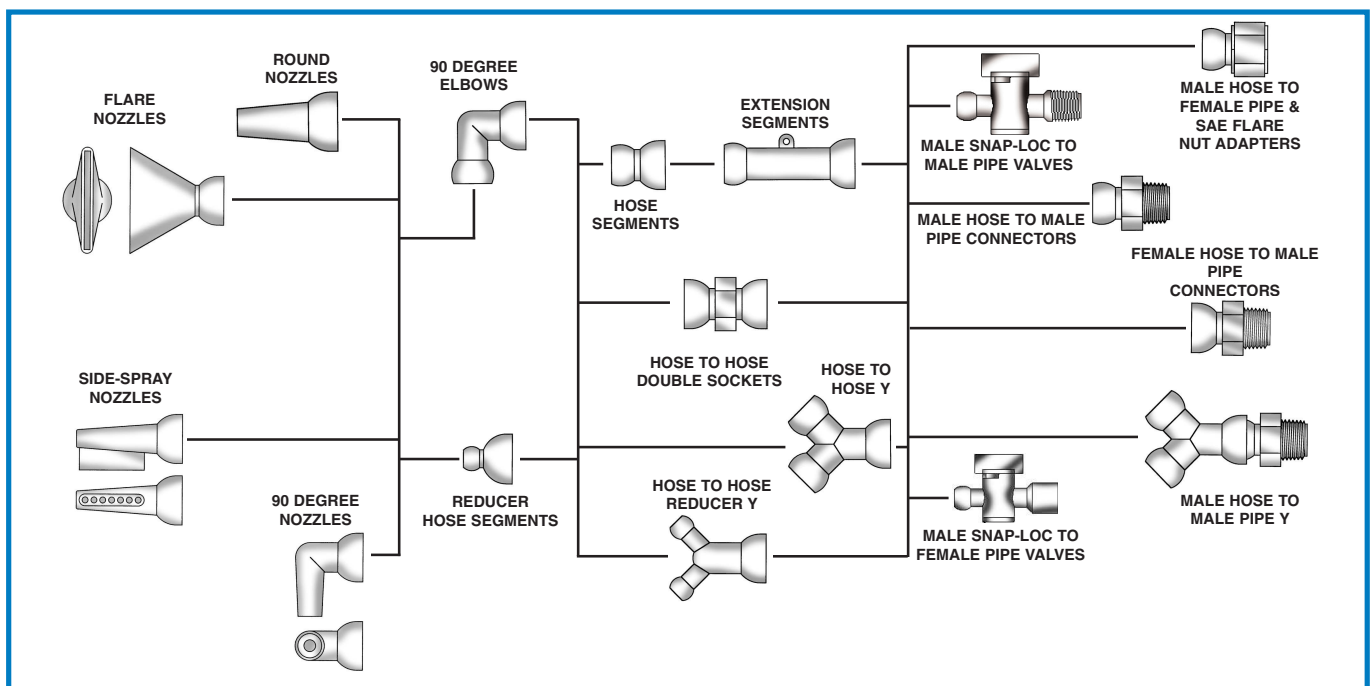
Contribute to outstanding performance with respect to "jetting" and holding power. Snap-Loc Systems are designed for normal shop air and fluid pressures.

### Fig. 3 Solid Hex Design

This solid hex design is superior to a ribbed design because it has less tendency to strip.

### Fig. 4 Durable Thread Design

Cedarberg Snap-Loc Systems have milled, not turned, threads. This results in better starting threads, and less cross threading. Threads are easier to re-use.



# Snap-Loc Systems

*More Than  
Just A  
Coolant Hose...*



- Flexible Arms
- Air / Liquid / Vacuum Hose

- Goosenecks
- Support Armatures

*...An Element Of Ingenuity.*

## **MORE THAN JUST A COOLANT HOSE...**

- Since the beginning, Cedarberg Snap-Loc Systems have served metalworking industries world-wide. However, the 3-dimensional flexibility and holding power of our design serves well in a wide range of applications. We work with product designers in many fields because our Snap-Loc Systems are...  
**...An Element of Ingenuity.**

## **INTERCHANGEABLE COMPONENTS:**

- Snap-Loc components are interchangeable; Reducers are available for 3/4" to 1/2" hose, and for 1/2" to 1/4" hose, allowing for the use of all three hose sizes in a single installation.

## **EASY HAND ASSEMBLY:**

- Snap-Loc assembly and disassembly is fast and easy. Assembly Pliers are available for the 1/4" and 1/2" Systems. The Universal Assembly Tool can be used for assembly of 1/4", 1/2" and 3/4" Systems. Separation Wedges for each of the three hose sizes simplify disassembly (Pg. 10).

## **HOSE BEND CAPABILITIES:**

- Snap-Loc hose may be bent to form tight turns. Minimum center-line diameters are as follows:
  - 1/4" Hose; 2" center-line diameter
  - 1/2" Hose; 3-1/4" center-line diameter
  - 3/4" Hose; 5-1/4" center-line diameter

## **MATERIALS:**

- Standard Snap-Loc Hose and Connector material is Delrin. Standard Nozzle material is polypropylene. Consult factory for alternate material availability.

## **CHEMICAL RESISTANCE:**

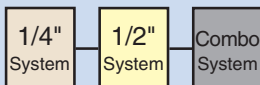
- Delrin exhibits superior chemical resistance to alcohols, aldehydes, esters, ethers, hydrocarbons (gasolines, lubricants, hydraulic fluid), agricultural chemicals, many weak acids and bases.
- Polypropylene provides good chemical resistance to a wide variety of chemical products, including alkalies, solvents, as well as acids.

## **WORKING PRESSURES:**

- Snap-Loc Systems components are designed for normal shop air and fluid pressures. They are not intended for high pressure applications. Maximum operating pressure is dependent upon many factors, including temperature of solution, hose and nozzle size, and whether pressure is induced slowly or instantaneously.

## **WORKING TEMPERATURES:**

- Maximum recommended working Temperature for Snap-Loc Systems is approximately 200° F (93°C).



**For Coolant Hose Set-Up And Quick Maintenance**



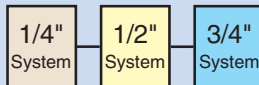
CAT. NO.	PRICE	QTY	DESCRIPTION	CODE
8525-282	53.29		Kit Includes:	AB
		4	1/4" x 12" Hose Assy	
		1	1/4" Extension Segment	
		2	1/16" Round Nozzle	
		2	1/8" Round Nozzle	
		2	1/4" Round Nozzle	
		2	1" Flare Nozzle	
		3	1/8" Connector	
		3	1/4" Connector	
		2	1/4" Y	
		1	1/4" Double Socket	
		1	1/4" Assembly Pliers	

CAT. NO.	PRICE	QTY	DESCRIPTION	CODE
8550-321	68.67		Kit Includes:	AB
		4	1/2" x 12" Hose Assy	
		1	1/2" Extension Segment	
		2	1/4" Round Nozzle	
		2	3/8" Round Nozzle	
		2	1/2" Round Nozzle	
		2	2" Flare Nozzle	
		3	3/8" Connector	
		3	1/2" Connector	
		2	1/2" Y	
		1	1/2" Y X 1/4" Reducer Y	
		1	1/2" Double Socket	
		1	1/2" x 1/4" Adapter	
		1	1/2" Assembly Pliers	

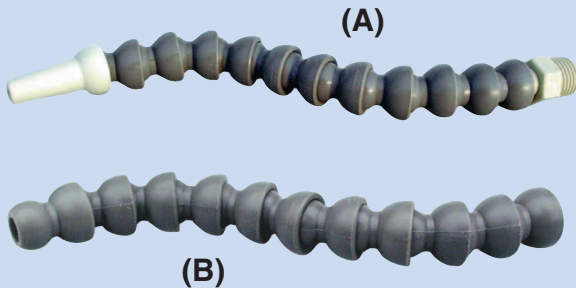
CAT. NO.	PRICE	QTY	DESCRIPTION	CODE
8550-322	108.94		Kit Includes:	AB
		3	1/4" x 12" Hose Assy	
		3	1/2" x 12" Hose Assy	
		1	1/4" Extension Segment	
		1	1/2" Extension Segment	
		2	1/4" x 1/16" Round Nozzle	
		2	1/4" x 1/8" Round Nozzle	
		2	1/4" x 1/4" Round Nozzle	
		2	1/2" x 1/4" Round Nozzle	
		2	1/2" x 3/8" Round Nozzle	
		2	1/2" x 1/2" Round Nozzle	
		2	1/4" x 1" Flare Nozzle	
		2	1/2" x 2" Flare Nozzle	
		3	1/4" x 1/8" Connector	
		3	1/4" x 1/4" Connector	
		3	1/2" x 3/8" Connector	
		3	1/2" x 1/2" Connector	
		1	1/4" Y	
		1	1/2" Y	
		1	1/2" x 1/4" Reducer Y	
		1	1/4" Double Socket	
		1	1/2" Double Socket	
		1	1/2" x 1/4" Adapter	
		1	1/4" Assembly Pliers	
		1	1/2" Assembly Pliers	



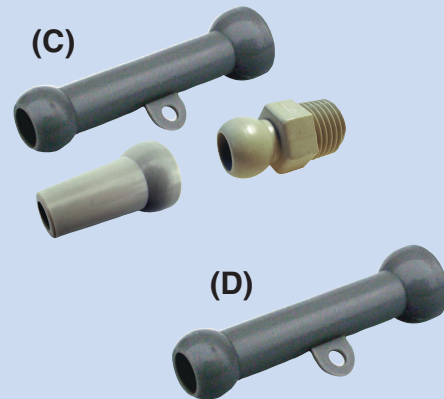
# Hose Assemblies & Parts



## Hose Assemblies & Segments



## Extension Assemblies & Segments



CAT. NO.	PRICE	DESCRIPTION	FIG. CODE
8425-11	9.14	Hose Assembly (A) (Approx. 13") Set Includes: 1/16", 1/8", 1/4" Nozzles; 1/8", 1/4" NPT Connectors	A
8525-157	9.14	Hose Assembly (A) (Approx. 13") Set Includes: 1/16", 1/8", 1/4" Nozzles; 1/8", 1/4" BSPT Conn	A
8425-12	7.46	12" Segment Pac (B)	A
8425-21	153.30	25 Ft. Bulk Pac (B)	A
8425-22	294.53	50 Ft. Bulk Pac (B)	A
8525-228	572.25	100 Ft. Bulk Pac (B)	A
8425-170	7.46	12" Segment Pac (Blk) (B)	A
8425-118	153.30	25 Ft. Bulk (Black) (B)	A
8425-119	294.53	50 Ft. Bulk (Black) (B)	A
8425-120	572.25	100 Ft. Bulk (Black) (B)	A

CAT. NO.	PRICE	DESCRIPTION	FIG. CODE
8450-11	10.45	Hose Assembly (A) (Approx. 13") Set Includes: 1/4", 3/8", 1/2" Nozzles; 3/8", 1/2" NPT Connectors	A
8550-175	10.45	Hose Assembly (A) (Approx. 13") Set Includes: 1/4", 3/8", 1/2" Nozzles; 3/8", 1/2" BSPT Connectors	A
8450-12	8.87	12" Segment Pac (B)	A
8450-21	179.97	25 Ft. Bulk Pac (B)	A
8450-22	348.81	50 Ft. Bulk Pac (B)	A
8550-211	687.75	100 Ft. Bulk Pac (B)	A
8450-155	8.87	12" Segment Pac (Blk) (B)	A
8450-118	179.97	25 Ft. Bulk (Black) (B)	A
8450-119	348.81	50 Ft. Bulk (Black) (B)	A
8450-120	687.75	100 Ft. Bulk (Black) (B)	A

CAT. NO.	PRICE	DESCRIPTION	FIG. CODE
8475-11	13.02	Hose Assembly (A) (Approx. 12-1/2") Set Includes: 5/8" Nozzle; 3/4" NPT Connector	A
8475-11 BSP	13.02	Hose Assembly (A) (Approx. 12-1/2") Set Includes: 5/8" Nozzle; 3/4" BSPT Connector	A
8475-12	9.87	12-1/2" Seg Pac (B)	A
8475-21	213.10	25 Ft. Bulk Pac (B)	A
8475-22	410.03	50 Ft. Bulk Pac (B)	A
8475-29	798.00	100 Ft. Bulk Pac (B)	A
8475-118	213.10	25 Ft. Bulk (Black) (B)	A
8475-119	410.03	50 Ft. Bulk (Black) (B)	A
8475-120	798.00	100 Ft. Bulk (Black) (B)	A

CAT. NO.	PRICE	DESCRIPTION	FIG. CODE
8425-154	11.81	Extension Assembly (C) (Approx. 12") Set Includes: 1/16", 1/8", 1/4" Nozzles; 1/8", 1/4" NPT Connectors	AB
8425-154 BSP	11.81	Extension Assembly (C) (Approx. 12") Set Includes: 1/16", 1/8", 1/4" Nozzles; 1/8", 1/4" BSPT Connectors	AB
8425-160	10.29	Extn Seg Pac of 6 (D)	AB
8425-161	41.48	Extn Seg Bag of 25 (D)	AB

CAT. NO.	PRICE	DESCRIPTION	FIG. CODE
8450-161	13.02	Extension Assembly (C) (Approx. 12") Set Includes: 1/4", 3/8", 1/2" Nozzles; 3/8", 1/2" NPT Connector	AB
8450-161 BSP	13.02	Extension Assembly (C) (Approx. 12") Set Includes: 5/8" Nozzles; 3/4" BSPT Connectors	AB
8450-162	11.50	Extn Seg Pac of 5 (D)	AB
8450-163	46.15	Extn Seg Bag of 25 (D)	AB

CAT. NO.	PRICE	DESCRIPTION	FIG. CODE
8475-54	15.07	Extension Assembly (C) (Approx. 12") Set Includes: 5/8" Nozzles; 3/4" NPT Connector	AB
8475-54 BSP	15.07	Extension Assembly (C) (Approx. 12") Set Includes: 5/8" Nozzles; 3/4" BSPT Connectors	AB
8475-55	13.49	Extn Seg Pac of 5 (D)	AB
8475-56	59.17	Extn Seg Bag of 25 (D)	AB

- Extension Segments (See Figs. C-D) may be used for fewer connections on long assemblies.
- All Extension Segments have a convenient eyelet for attaching to surrounding structures for extra long assemblies.
- Extension Assemblies also available with BSPT Connectors

**Standard Material:** Delrin 500

**Polypropylene Available:** Consult Factory

**Standard Color:** NPT Connectors Light Gray,  
BSPT Connectors Dark Gray, Hose Segments  
Dark Gray

Other Colors Available (Consult Factory)

# Round & Flare Nozzles, 90° Fittings



CAT. NO.	PRICE	DESCRIPTION	CODE
8425-13	7.67	Nozzle Assortment Pac (1 each) 1/16", 1/8", 1/4" Round, 1" Flare 1/16" Nozzle	A
8425-14	5.09	Pac of 4	A
8425-23	44.63	Bag of 50	A
8425-110	44.63	Bag of 50 (Yellow)	A
8425-114	44.63	Bag of 50 (Orange)	A
8525-237	5.09	Pac of 4 (Delrin Dk Gray)	A
8525-240	44.99	Bag of 50 (Delrin Dk Gray)	A
8425-15	5.09	Pac of 4	A
8425-24	44.63	Bag of 50	A
8425-111	44.63	Bag of 50 (Yellow)	A
8425-115	44.63	Bag of 50 (Orange)	A
8525-238	5.09	Pac of 4 (Delrin Dk Gray)	A
8525-241	44.99	Bag of 50 (Delrin Dk Gray)	A
8425-16	5.09	Pac of 4	A
8425-25	44.63	Bag of 50	A
8425-112	44.63	Bag of 50 (Yellow)	A
8425-116	44.63	Bag of 50 (Orange)	A
8525-239	5.09	Pac of 4 (Delrin Dk Gray)	A
8525-242	44.99	Bag of 50 (Delrin Dk Gray)	A

CAT. NO.	PRICE	DESCRIPTION	CODE
8425-19	7.46	1" Flare Nozzle Pac of 2	A
8425-28	55.65	Bag of 25	A
8425-113	55.13	Bag of 25 (Yellow)	A
8425-117	55.13	Bag of 25 (Orange)	A
8525-250	7.46	Pac of 2 (Delrin Dk Gray)	A
8525-251	55.65	Bag of 25 (Delrin Dk Gray)	A

CAT. NO.	PRICE	DESCRIPTION	CODE
8425-181	6.41	1/4" 90° Elbow; Female Hose x Male Hose	AB
8425-182	57.96	Bag of 25	AB

CAT. NO.	PRICE	DESCRIPTION	CODE
8425-183	5.30	90° Nozzles 1/4" x 1/8" 90° Nozzles Pac of 2	AC
8425-184	41.48	1/4" x 1/8" 90° Nozzles Bag of 25	AC
8425-185	5.30	1/4" x 1/4" 90° Nozzles Pac of 2	AC
8425-186	41.48	1/4" x 1/4" 90° Nozzles Bag of 25	AC

CAT. NO.	PRICE	DESCRIPTION	CODE
8425-187	6.88	Side Spray Nozzles 1/4" Side Spray Nozzles Pac of 2	AC
8425-188	56.70	1/4" Side Spray Nozzles Bag of 25	AC

CAT. NO.	PRICE	DESCRIPTION	CODE
8450-13	8.66	Nozzle Assortment Pac (1 each) 1/4", 3/8", 1/2" Round, 2" Flare 1/4" Nozzle	A
8450-14	5.30	Pac of 4	A
8450-23	50.93	Bag of 50	A
8450-110	50.93	Bag of 50 (Yellow)	A
8450-114	50.93	Bag of 50 (Orange)	A
8550-230	5.36	Pac of 4 (Delrin Dk Gray)	A
8550-233	50.93	Bag of 50 (Delrin Dk Gray)	A
8450-15	5.30	Pac of 4	A
8450-24	50.93	Bag of 50	A
8450-111	50.93	Bag of 50 (Yellow)	A
8450-115	50.93	Bag of 50 (Orange)	A
8550-231	5.36	Pac of 4 (Delrin Dk Gray)	A
8550-234	50.93	Bag of 50 (Delrin Dk Gray)	A
8450-16	5.30	Pac of 4	A
8450-25	50.93	Bag of 50	A
8450-112	50.93	Bag of 50 (Yellow)	A
8450-116	50.93	Bag of 50 (Orange)	A
8550-232	5.36	Pac of 4 (Delrin Dk Gray)	A
8550-235	50.93	Bag of 50 (Delrin Dk Gray)	A

CAT. NO.	PRICE	DESCRIPTION	CODE
8450-19	8.87	2" Flare Nozzle Pac of 2	A
8450-28	73.40	Bag of 25	A
8450-113	73.29	Bag of 25 (Yellow)	A
8450-117	73.34	Bag of 25 (Orange)	A
8550-224	8.87	Pac of 2 (Delrin Dk Gray)	A
8550-225	73.40	Bag of 25 (Delrin Dk Gray)	A

CAT. NO.	PRICE	DESCRIPTION	CODE
8450-196	7.19	1/2" 90° Elbow; Female Hose x Male Hose	AB
8450-197	68.67	Bag of 25	AB

CAT. NO.	PRICE	DESCRIPTION	CODE
8450-198	5.93	90° Nozzles 1/2" x 1/4" 90° Nozzles Pac of 2	AC
8450-199	44.99	1/2" x 1/4" 90° Nozzles Bag of 25	AC
8450-200	5.93	1/2" x 3/8" 90° Nozzles Pac of 2	AC
8450-201	44.99	1/2" x 3/8" 90° Nozzles Bag of 25	AC

CAT. NO.	PRICE	DESCRIPTION	CODE
8450-202	7.77	Side Spray Nozzles 1/2" Side Spray Nozzles Pac of 2	AC
8450-203	65.10	1/2" Side Spray Nozzles Bag of 25	AC

CAT. NO.	PRICE	DESCRIPTION	CODE
8475-16	6.46	5/8" Nozzle Pac of 4 (Delrin Dk Gray)	A
8475-25	62.74	Bag of 50 (Delrin Dk Gray)	A
8475-149	62.74	Bag of 50 (Orange)	A

Standard Material: Polypropylene  
Delrin 500 Available: Consult Factory  
Standard Color: Light Gray, Other Colors Available

CAT. NO.	PRICE	DESCRIPTION	CODE
8475-19	10.40	3" Flare Nozzle Pac of 2	A
8475-28	97.07	Bag of 25	A
8475-148	97.07	Bag of 25 (Orange)	A
8475-106	10.40	Pac of 2 (Delrin Dk Gray)	A
8475-107	97.07	Bag of 25 (Delrin Dk Gray)	A

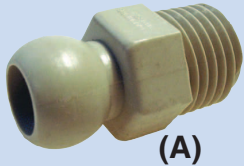
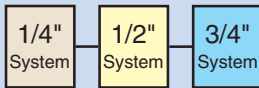
CAT. NO.	PRICE	DESCRIPTION	CODE
8475-136	7.67	3/4" 90° Elbow; Female Hose x Male Hose	AB
8475-137	59.17	Bag of 25	AB

CAT. NO.	PRICE	DESCRIPTION	CODE
8475-138	7.67	90° Nozzles 3/4" x 5/8" 90° Nozzles Pac of 2	AC
8475-139	59.17	3/4" x 5/8" 90° Nozzles Bag of 25	AC

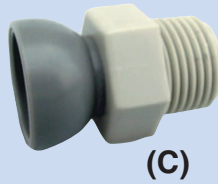
**BENEFITS - 90° FITTINGS:**  
• Excellent for tight turns where space is limited.

CAT. NO.	PRICE	DESCRIPTION	CODE
8475-140	8.56	Side Spray Nozzles 3/4" Side Spray Nozzles Pac of 2	AC
8475-141	80.48	3/4" Side Spray Nozzles Bag of 25	AC

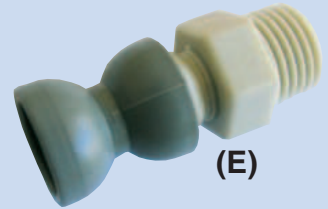
# Connectors



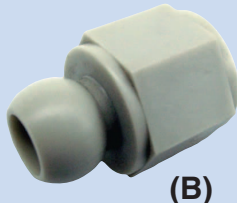
(A)



(C)



(E)



(B)

## Connectors



(D)

CAT. NO.	PRICE	DESCRIPTION	FIG. CODE
		<b>Male Hose to Male Pipe Thread Connector (A)</b>	
8425-17	5.09	1/8" NPT Pac of 4	A
8425-26	46.20	1/8" NPT Bag of 50	A
8425-18	5.09	1/4" NPT Pac of 4	A
8425-27	46.20	1/4" NPT Bag of 50	A
8525-177	5.09	1/8" BSPT Pac of 4	A
8525-178	46.15	1/8" BSPT Bag of 50	A
8525-179	5.09	1/4" BSPT Pac of 4	A
8525-180	46.15	1/4" BSPT Bag of 50	A

CAT. NO.	PRICE	DESCRIPTION	FIG. CODE
		<b>Male Hose to Female Pipe Thread Connector (B)</b>	
8525-199	7.46	1/8" FPT Pac of 4	A
8525-200	82.85	1/8" FPT Bag of 50	A
8525-197	7.46	1/4" FPT Pac of 4	A
8525-198	82.85	1/4" FPT Bag of 50	A

CAT. NO.	PRICE	DESCRIPTION	FIG. CODE
		<b>Female Hose to Male Pipe Thread Connector (E)</b>	
8525-103A	7.46	1/8" NPT Pac of 2	A
8525-130A	76.91	1/8" NPT Bag of 25	A
8525-104A	7.46	1/4" NPT Pac of 2	A
8525-131A	76.91	1/4" NPT Bag of 25	A
8525-167A	7.46	1/8" BSPT Pac of 2	A
8525-191A	76.91	1/8" BSPT Bag of 25	A
8525-170A	7.46	1/4" BSPT Pac of 2	A
8525-192A	76.91	1/4" BSPT Bag of 25	A

CAT. NO.	PRICE	DESCRIPTION	FIG. CODE
		<b>SAE Flare Nut Adapter (D)</b>	
8525-195	7.46	1/4" Pac of 4	A
8525-196	82.85	1/4" Bag of 50	A
8525-226	8.30	3/8" Pac of 4	A
8525-227	88.78	3/8" Bag of 50	A

**Standard Material:** Delrin 500  
**Polypropylene Available:** Consult Factory  
**Standard Color:** NPT Connectors Light Gray, BSPT Connectors Dark Gray, Hose Segments Dark Gray

CAT. NO.	PRICE	DESCRIPTION	FIG. CODE
		<b>Male Hose to Male Pipe Thread Connector (A)</b>	
8450-17	5.30	3/8" NPT Pac of 4	A
8450-26	52.08	3/8" NPT Bag of 50	A
8450-18	5.30	1/2" NPT Pac of 4	A
8450-27	52.08	1/2" NPT Bag of 50	A
8550-164	5.36	3/8" BSPT Pac of 4	A
8550-165	52.08	3/8" BSPT Bag of 50	A
8550-166	5.36	1/2" BSPT Pac of 4	A
8550-167	52.08	1/2" BSPT Bag of 50	A
8450-235	5.05	3/4"-16 NF Pac of 4	A
8450-229	49.60	3/4"-16 NF Bag of 50	A

CAT. NO.	PRICE	DESCRIPTION	FIG. CODE
		<b>Male Hose to Female Pipe Thread Connector (B)</b>	
8550-182	10.08	3/8" FPT Pac of 4	A
8550-183	93.56	3/8" FPT Bag of 50	A
8550-188	10.08	1/2" FPT Pac of 4	A
8550-189	93.56	1/2" FPT Bag of 50	A

CAT. NO.	PRICE	DESCRIPTION	FIG. CODE
		<b>Female Hose to Male Pipe Thread Connector (C)</b>	
8550-104	8.87	3/8" NPT Pac of 2	A
8550-135	80.48	3/8" NPT Bag of 25	A
8550-105	8.87	1/2" NPT Pac of 2	A
8550-136	80.48	1/2" NPT Bag of 25	A
8550-180	8.87	3/8" BSPT Pac of 2	A
8550-186	80.48	3/8" BSPT Bag of 25	A
8550-181	8.87	1/2" BSPT Pac of 2	A
8550-187	80.48	1/2" BSPT Bag of 25	A

CAT. NO.	PRICE	DESCRIPTION	FIG. CODE
		<b>SAE Flare Nut Adapter (D)</b>	
8550-176	8.87	3/8" Pac of 4	A
8550-177	93.56	3/8" Bag of 50	A

**Standard Material:** Delrin 500  
**Polypropylene Available:** Consult Factory  
**Standard Color:** NPT Connectors Light Gray, BSPT Connectors Dark Gray, Hose Segments Dark Gray

CAT. NO.	PRICE	DESCRIPTION	FIG. CODE
		<b>Male Hose to Male Pipe Thread Connector (A)</b>	
8475-18	6.46	3/4" NPT Pac of 4	A
8475-27	62.74	3/4" NPT Bag of 50	A
8475-18	6.46	3/4" BSPT Pac of 4	A
8475-27	62.69	3/4" BSPT Bag of 50	A

CAT. NO.	PRICE	DESCRIPTION	FIG. CODE
		<b>Female Hose to Male Pipe Thread Connector (C)</b>	
8475-112	11.81	3/4" NPT Pac of 2	A
8475-113	130.20	3/4" NPT Bag of 25	A

CAT. NO.	PRICE	DESCRIPTION	FIG. CODE
		<b>Female Hose to Male Pipe Thread Connector (C)</b>	
8475-112	11.81	3/4" NPT Pac of 2	A
8475-113	130.20	3/4" NPT Bag of 25	A

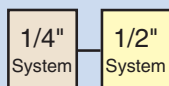
CAT. NO.	PRICE	DESCRIPTION	FIG. CODE
		<b>SAE Flare Nut Adapter (D)</b>	
8550-176	8.87	3/8" Pac of 4	A
8550-177	93.56	3/8" Bag of 50	A

**Standard Material:** Delrin 500  
**Polypropylene Available:** Consult Factory  
**Standard Color:** NPT Connectors Light Gray, BSPT Connectors Dark Gray, Hose Segments Dark Gray





# Valves



## Plastic Snap-Loc Valves



CAT. NO.	PRICE	DESCRIPTION	CODE	CAT. NO.	PRICE	DESCRIPTION	CODE
8525-342	7.09	1/4" Male Snap-Loc x 1/4" Male NPT Black (1)	L	8525-344	7.09	1/4" Male Snap-Loc x 1/4" Female NPT Black (1)	L
8525-334	11.24	1/4" Male Snap-Loc x 1/4" Male NPT Black (2)	L	8525-340	11.24	1/4" Male Snap-Loc x 1/4" Female NPT Black (2)	L
8525-335	51.45	1/4" Male Snap-Loc x 1/4" Male NPT Black (10)	L	8525-341	51.45	1/4" Male Snap-Loc x 1/4" Female NPT Black (10)	L
8525-343	7.09	1/4" Male Snap-Loc x 1/4" Male BSPT Dk Gray (1)	L	8525-345	7.09	1/4" Male Snap-Loc x 1/4" Female BSPT Dk Gray (1)	L
8525-338	11.24	1/4" Male Snap-Loc x 1/4" Male BSPT Dk Gray (2)	L	8525-336	11.24	1/4" Male Snap-Loc x 1/4" Female BSPT Dk Gray (2)	L
8525-339	51.45	1/4" Male Snap-Loc x 1/4" Male BSPT Dk Gray (10)	L	8525-337	51.45	1/4" Male Snap-Loc x 1/4" Female BSPT Dk Gray (10)	L
8550-398	8.30	1/2" Male Snap-Loc x 1/2" Male NPT Black (1)	L	8550-400	8.30	1/2" Male Snap-Loc x 1/2" Female NPT Black (1)	L
8550-388	14.18	1/2" Male Snap-Loc x 1/2" Male NPT Black (2)	L	8550-394	14.18	1/2" Male Snap-Loc x 1/2" Female NPT Black (2)	L
8550-389	62.74	1/2" Male Snap-Loc x 1/2" Male NPT Black (10)	L	8550-395	62.74	1/2" Male Snap-Loc x 1/2" Female NPT Black (10)	L
8550-399	8.30	1/2" Male Snap-Loc x 1/2" Male BSPT Dk Gray (1)	L	8550-401	8.30	1/2" Male Snap-Loc x 1/2" Female BSPT Dk Gray (1)	L
8550-392	14.18	1/2" Male Snap-Loc x 1/2" Male BSPT Dk Gray (2)	L	8550-390	14.18	1/2" Male Snap-Loc x 1/2" Female BSPT Dk Gray (2)	L
8550-393	62.74	1/2" Male Snap-Loc x 1/2" Male BSPT Dk Gray (10)	L	8550-391	62.74	1/2" Male Snap-Loc x 1/2" Female BSPT Dk Gray (10)	L

## Plastic Threaded Valves



CAT. NO.	PRICE	DESCRIPTION	CODE	CAT. NO.	PRICE	DESCRIPTION	CODE
8525-346	7.09	1/4" Male NPT x 1/4" Female NPT Black (1)	L	8525-352	7.09	1/4" Female NPT x 1/4" Female NPT Black (1)	L
8525-347	11.24	1/4" Male NPT x 1/4" Female NPT Black (2)	L	8525-353	11.24	1/4" Female NPT x 1/4" Female NPT Black (2)	L
8525-348	51.45	1/4" Male NPT x 1/4" Female NPT Black (10)	L	8525-354	51.45	1/4" Female NPT x 1/4" Female NPT Black (10)	L
8525-349	7.09	1/4" Male BSPT x 1/4" Female BSPT Dk Gray (1)	L	8525-355	7.09	1/4" Female BSPT x 1/4" Female BSPT Dk Gray (1)	L
8525-350	11.24	1/4" Male BSPT x 1/4" Female BSPT Dk Gray (2)	L	8525-356	11.24	1/4" Female BSPT x 1/4" Female BSPT Dk Gray (2)	L
8525-351	51.45	1/4" Male BSPT x 1/4" Female BSPT Dk Gray (10)	L	8525-357	51.45	1/4" Female BSPT x 1/4" Female BSPT Dk Gray (10)	L
8550-402	8.30	1/2" Male NPT x 1/2" Female NPT Black (1)	L	8550-408	8.30	1/2" Female NPT x 1/2" Female NPT Black (1)	L
8550-403	14.18	1/2" Male NPT x 1/2" Female NPT Black (2)	L	8550-409	14.18	1/2" Female NPT x 1/2" Female NPT Black (2)	L
8550-404	62.74	1/2" Male NPT x 1/2" Female NPT Black (10)	L	8550-410	62.74	1/2" Female NPT x 1/2" Female NPT Black (10)	L
8550-405	8.30	1/2" Male BSPT x 1/2" Female BSPT Dk Gray (1)	L	8550-411	8.30	1/2" Female BSPT x 1/2" Female BSPT Dk Gray (1)	L
8550-406	14.18	1/2" Male BSPT x 1/2" Female BSPT Dk Gray (2)	L	8550-412	14.18	1/2" Female BSPT x 1/2" Female BSPT Dk Gray (2)	L
8550-407	62.74	1/2" Male BSPT x 1/2" Female BSPT Dk Gray (10)	L	8550-413	62.74	1/2" Female BSPT x 1/2" Female BSPT Dk Gray (10)	L

Standard Material: Delrin 500.

Other Valves Available: Consult Factory.

Standard Colors: 1/4": NPT Black, BSPT Dk Gray  
1/2": NPT Dk Gray, BSPT Dk Gray

# Flood King/Manifold Kit/ Assembly & Separation Tools

## Flood King

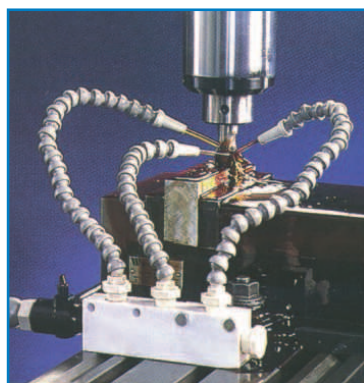


CAT. NO.	PRICE	QTY	DESCRIPTION	CODE
8550-249	56.81		<b>Flood King</b>	C
			Kit Includes:	
		1	1/2" Ball Valve	
		4	1/2" x 12" Hose Assembly	
		4	Male Hose x 3/8" NPT Connectors	
		4	1/2" Nozzles	
		1	Manifold Block with Mounting Bracket	
		2	NPT Plugs	

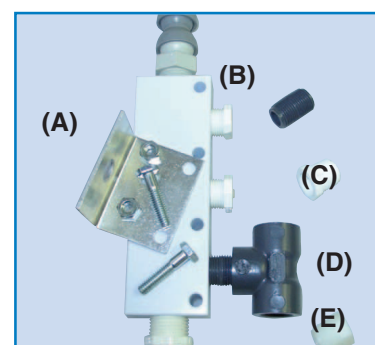
### FEATURES:

- Valve Control
- Up to four hose lines
- Interchangeable nozzles with different diameters
- Flexible Snap-Loc for direct flow into flood area
- Vibration wandering eliminated
- Stays in place
- High chemical resistance
- Any length or shape instantly available
- Multiple uses

## Universal Manifold Kit



CAT. NO.	PRICE	QTY	DESCRIPTION	CODE
8550-116	71.03		<b>Universal Manifold Kit</b>	C
			Kit Includes:	
		1	Manifold Block	
		1	Mounting Bracket	
		1	1/2" Female x 1/2" NPT Male Connector	
		1	1/2" NPT Ball Valve	
		2	1/2" NPT Close Nipple	
		3	3/8" NPT Close Nipple	
		6	3/8" NPT x 1/4" NPT Reducer Bushing	
		1	1/2" NPT Plug	
		1	3/8" NPT Plug	
		3	3/8" NPT Tee	
		2	1/4"-20 Hex Head Screw	
		2	1/4"-20 Hex Head Nut	



## Manifold Kit Accessories

CAT. NO.	PRICE	DESCRIPTION	Fig.	CODE
		<b>Manifold Block &amp; Mounting Bracket</b>	(A)	
8550-121	22.44	Pac of 1 Set		C
8550-140	112.46	Bag of 6 Sets		C

## Assembly & Separation Tools



Separation Wedges

CAT. NO.	PRICE	DESCRIPTION	CODE
8701-030	6.46	1/4" Separation Wedge	B
8701-031	8.61	1/2" Separation Wedge	B
8701-032	10.76	3/4" Separation Wedge	B

### BENEFITS:

- Simple tool slips easily over hose components for quick separation of parts
- Works well in awkward positions or on machines



Universal Assembly Tool

CAT. NO.	PRICE	DESCRIPTION	CODE
8701-024	42.63	1/4" Universal Assembly Kit	B
8701-025	47.36	1/2" Universal Assembly Kit	B
8701-026	52.08	3/4" Universal Assembly Kit	B
8701-019		1/4" Line-Up Rod	B
8701-020		1/2" Line-Up Rod	B
8701-021		3/4" Line-Up Rod	B
8701-022		Push Bar	B
8701-023		Base	B

### FEATURES:

- Simple to install and easy to use
- Assembles up to 12" hose lengths
- Purchase additional rods to assemble all sizes
- Assembles hose segments, as well as round nozzles and connectors of same size



Assembly Pliers

CAT. NO.	PRICE	DESCRIPTION	CODE
8701-006	13.13	Assembly Pliers for 1/4" I. D. Systems	B
8701-007	13.13	Assembly Pliers for 1/2" I. D. Systems	B

### BENEFITS:

- Get a tight grip on snap-fit
- Great for special assemblies
- Tool makes it easier to get leverage for assembly
- Eliminates frustration of assembly with oily hands or in awkward positions on machines
- Compatible with most "Brand X" hoses

# Magna-Flow/E-Z Mist

## Magna-Flow

Efficient Flow Control To Deliver Air / Liquid Coolant Where It Is Needed



### FEATURES:

- Control valve allows convenient adjustment of air / coolant near work
- Barbed connection easily adapts to regulated shop air or machine coolant pump
- Magnetic Base (38 Lb. Pull) holds unit firmly in position
- Made of high quality non-corrosive materials
- Flexible hose can be easily directed and stays in position

### BENEFITS:

- Extends tool life with precise coolant delivery
- Clears chips from work piece for easier visual inspection
- Great for EDM flushing
- Eliminates awkward support & adjustment
- Quickly transfers to other machines



CAT. NO.	PRICE	DESCRIPTION	CODE
8525-262	37.91	Magna-Flow Single Pac Single 9" Length of 1/4" I.D. Hose 1/8" I.D. Nozzle	I
8525-263	42.63	Magna-Flow Dual Pac Two 9" Lengths of 1/4" I.D. Hose 1/8" I.D. Nozzle	I

### APPLICATION NOTE:

- It is easy to adapt units for more nozzle outlets. Extra hose, Y-fittings, and nozzles may be purchased separately.

### Replacement Parts

CAT. NO.	PRICE	DESCRIPTION	CODE
8702-043	21.00	Mag Base Assembly	II
8525-342	7.09	1/4" SL x MPT Valve	L

## E-Z Mist

Reliable Mist Flow With Precision Control



### FEATURES:

- Get the right mist mixture with separate air and fluid controls
- Fully assembled, ready to use
- No special tank required
- Magnetic base can be easily repositioned
- Made of high quality non-corrosive materials

### BENEFITS:

- Extend tool life with optimal heat dissipation
- Allows correct mist mixture for any job
- Chemical savings
- Flexible hose stays in position to direct mist flow with ease
- Maintenance minimized by in-line coolant filter

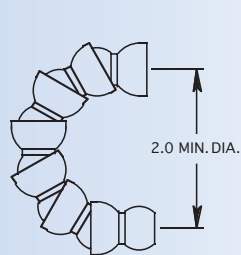
CAT. NO.	PRICE	DESCRIPTION	CODE
8703-002	147.00	E-Z Mist Precision Control Kit Includes: 1/4" NPT Ball Valve 1/4" NPT Quick Disconnect 12" Hose Assembly with 1/8" Nozzle Pressure Gauge 1/4" Regulator Aspirator Foot Strainer 3/8" O.D. Tubing Magnetic Base	I

CAT. NO.	PRICE	DESCRIPTION	CODE
6460-001		Aspirator Assembly With Strainer	II
8702-043	21.00	Mag Base Assembly	II
8525-346	7.09	1/4" MPT x FPT Valve	L
6420-001		Regulator	II
6480-001		1" Diameter Pressure Gauge	II
6530-001		Strainer Assembly	II
6501-002		3/8" O.D. Plastic Tubing (1 Ft)	II
8703-004		Precision Regulator Gauge Kit	II
8703-006		E-Z Mist 12" Hose Assembly with 1/8" Nozzle	II

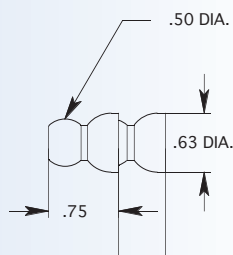
### APPLICATION NOTES:

- E-Z Mist Precision Control Kit utilizes a built in regulator so shop air can be directly applied. Maintain close pressure tolerances for maximum misting efficiency and maximum cost savings

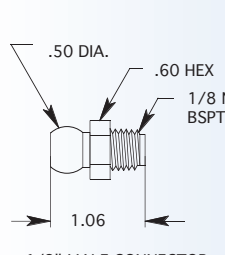
## 1/4" Snap-Loc Dimensions (Inches)



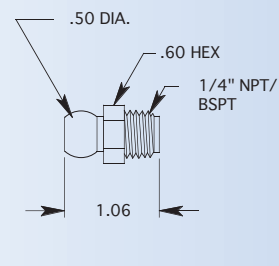
1/4" HOSE



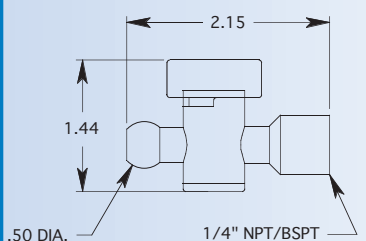
1/4" BODY SEGMENTS



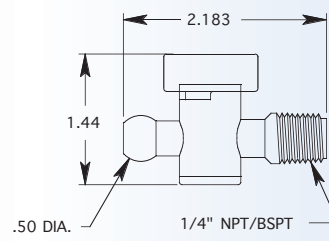
1/8" MALE CONNECTOR



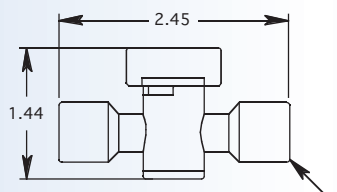
1/4" MALE CONNECTOR



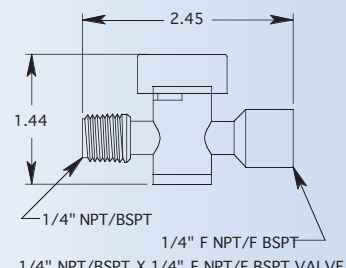
1/4" HOSE X 1/4" F NPT/F BSPT VALVE



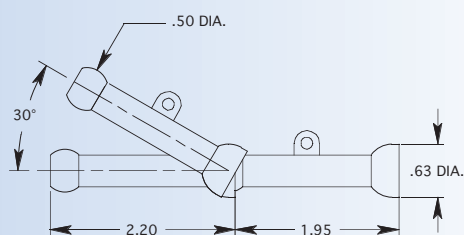
1/4" HOSE X 1/4" NPT/BSPT VALVE



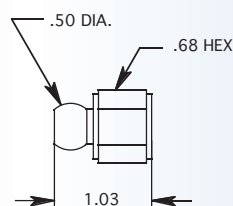
1/4" F NPT/BSPT X 1/4" F NPT/BSPT VALVE



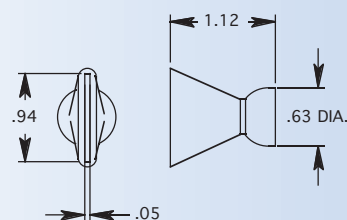
1/4" F NPT/F BSPT  
1/4" NPT/BSPT X 1/4" F NPT/F BSPT VALVE



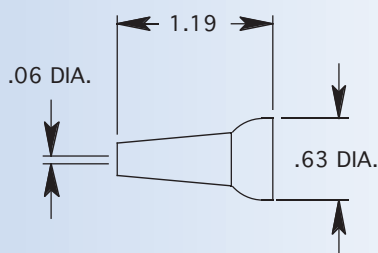
1/4" EXTENSION SEGMENTS



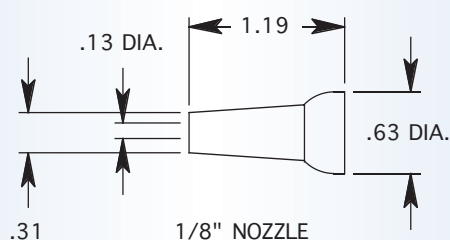
1/8" FPT FEMALE CONNECTOR  
1/4" FPT FEMALE CONNECTOR



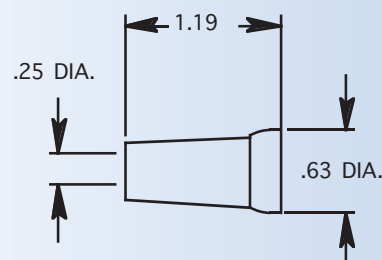
1" FLARE NOZZLE



1/16" NOZZLE



1/8" NOZZLE

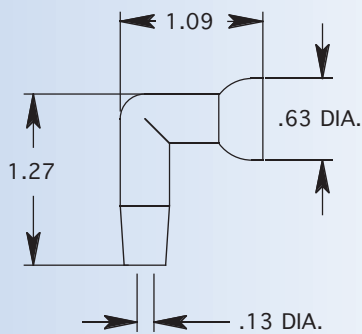


1/4" NOZZLE

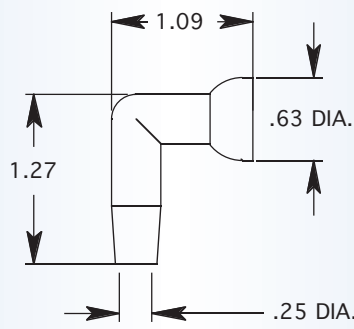


# Technical & Dimensional Data

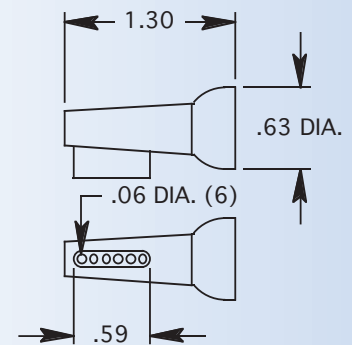
## 1/4" Snap-Loc Dimensions (Inches)



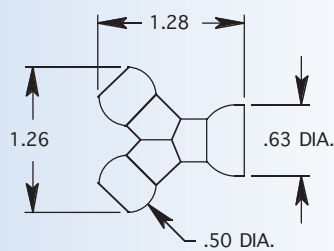
1/8" 90 DEGREE NOZZLE



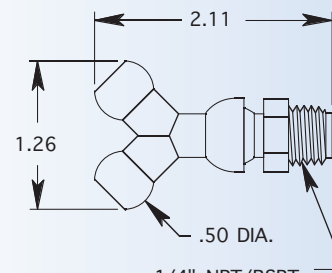
1/4" 90 DEGREE NOZZLE



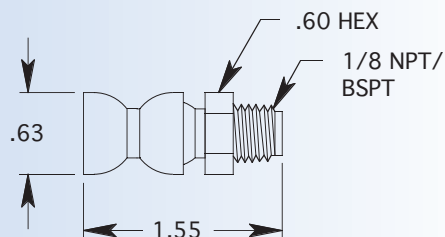
1/4" SIDE-SPRAY NOZZLE



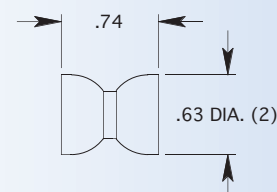
1/4" Y



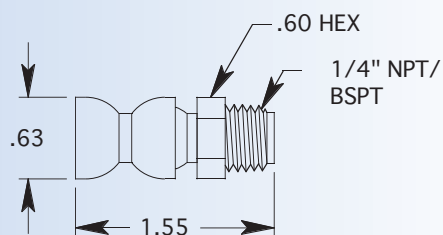
1/4" Y X 1/8" & 1/4" CONNECTOR MOLDED



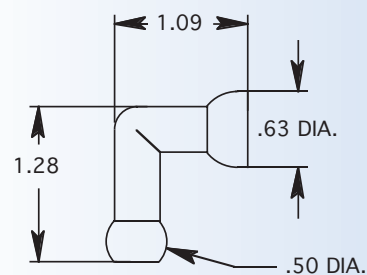
1/4" F HOSE X 1/8" CONNECTOR



1/4" DOUBLE SOCKET ADAPTER



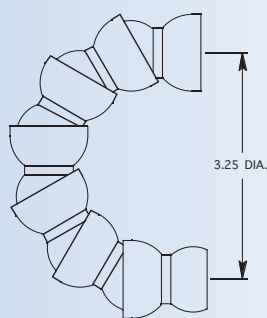
1/4" F HOSE X 1/4" CONNECTOR



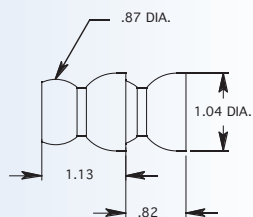
1/4" 90 DEGREE ELBOW

# Technical & Dimensional Data

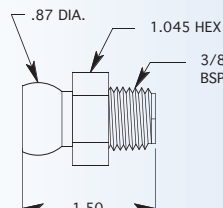
## 1/2" Snap-Loc Dimensions (Inches)



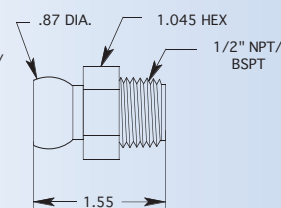
1/2" HOSE



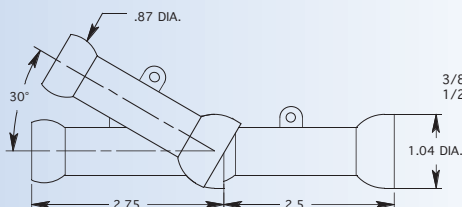
1/2" BODY SEGMENTS



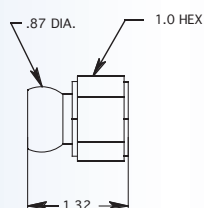
3/8" MALE CONNECTOR



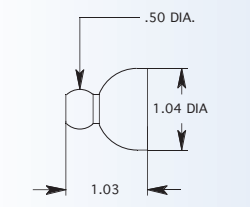
1/2" MALE CONNECTOR



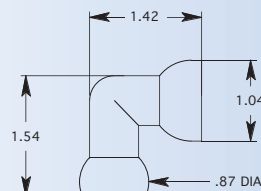
1/2" EXTENSION SEGMENTS



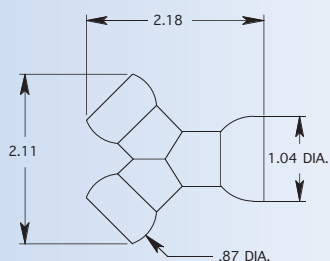
3/8" FPT FEMALE CONNECTOR  
1/2" FPT FEMALE CONNECTOR



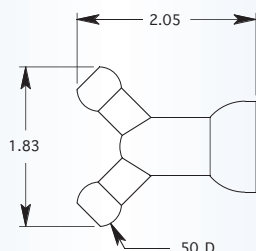
1/2" X 1/4" BODY SEGMENT ADAPTER



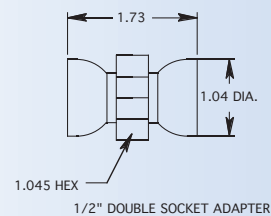
1/2" 90 DEGREE ELBOW



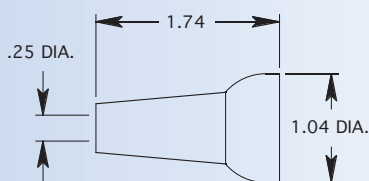
1/2" Y MOLDED



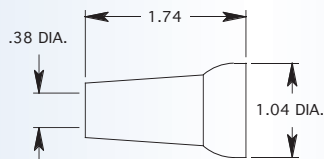
1/2" X 1/4" REDUCER Y - MOLDED STYLE



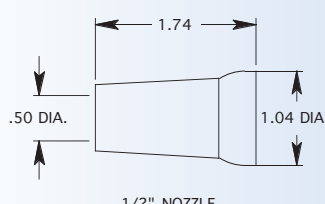
1/2" DOUBLE SOCKET ADAPTER



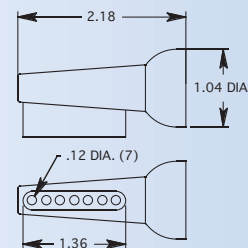
1/4" NOZZLE  
1/4" NOZZLE



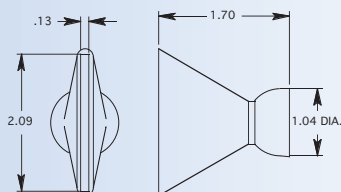
3/8" NOZZLE



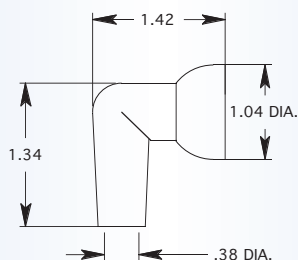
1/2" NOZZLE



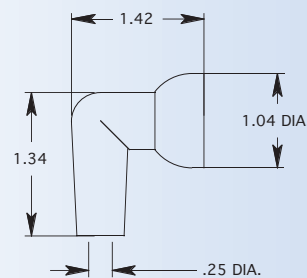
1/2" SIDE-SPRAY NOZZLE



2" FLARE NOZZLE  
2" FLARE NOZZLE



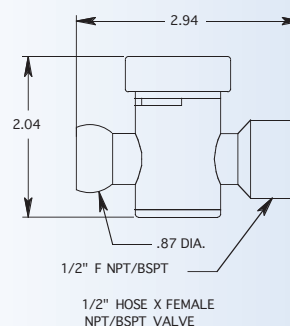
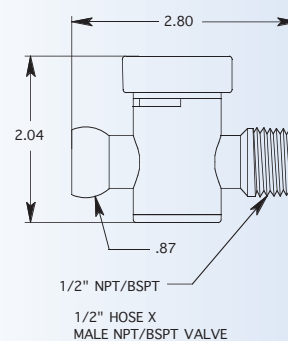
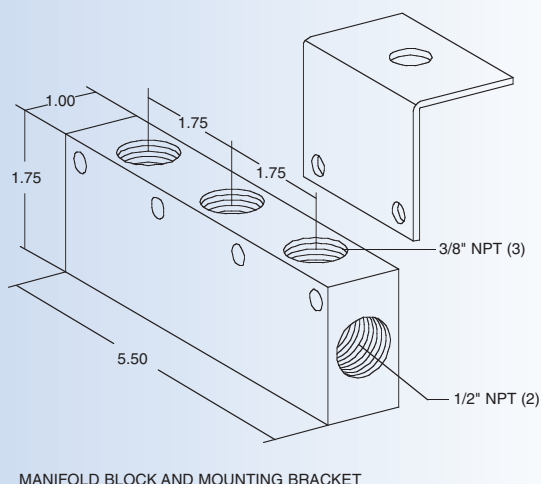
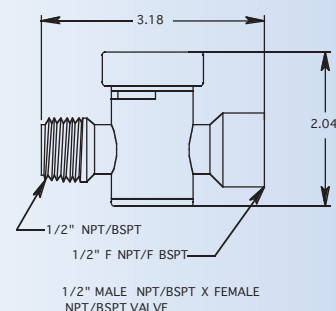
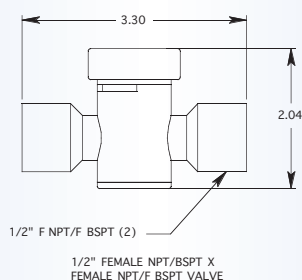
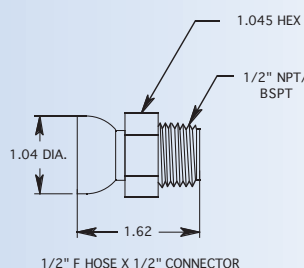
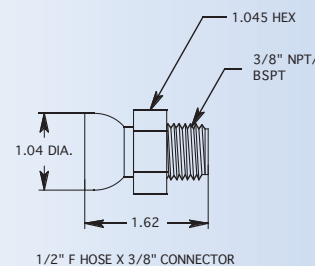
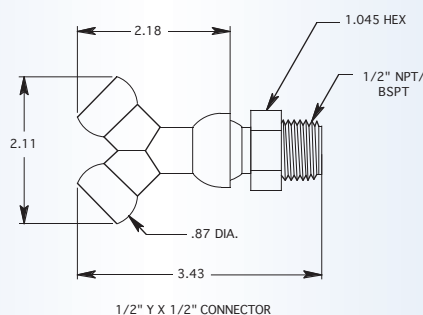
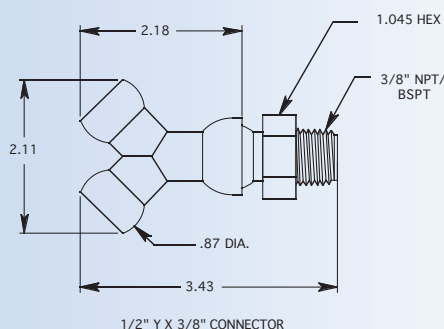
3/8" 90 DEGREE NOZZLE



1/4" 90 DEGREE NOZZLE

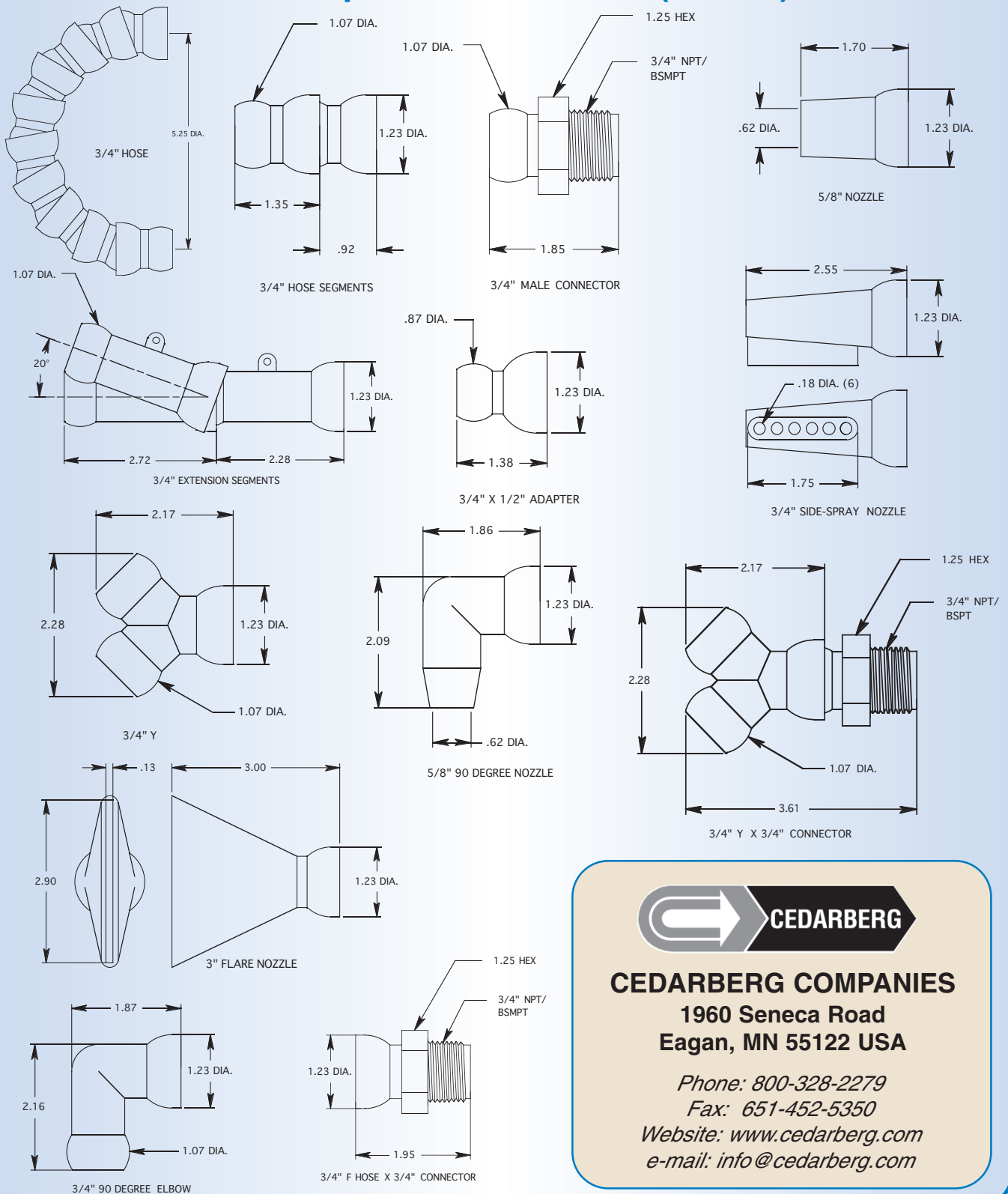
# Technical & Dimensional Data

## 1/2" Snap-Loc Dimensions (Inches)



# Technical & Dimensional Data

## 3/4" Snap-Loc Dimensions (Inches)



### CEDARBERG COMPANIES

1960 Seneca Road  
Eagan, MN 55122 USA

Phone: 800-328-2279

Fax: 651-452-5350

Website: [www.cedarberg.com](http://www.cedarberg.com)

e-mail: [info@cedarberg.com](mailto:info@cedarberg.com)